

User Manual Book

(Kitchen Tap)



Thank you for your trust in choosing MODENA products for your household needs. With your satisfaction as our priority, we constantly aim to deliver stylishly designed products equipped with state-of-the-art technology to assist you in your daily activities.

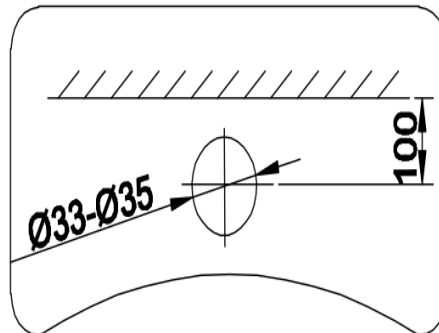
This is your guidebook containing everything you need to know about our product. Please reach us if you need further assistance or other information via our Customer Care or our official website www.MODENA.com.

MODENA

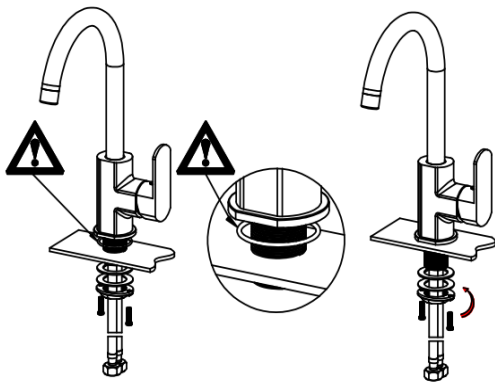
KITCHEN TAP INSTALLATION MANUAL



1. Create a cut-out line as below picture on the medium that will be used. Then, drill the holes on the cut-out line following the shape and size that has been made (in accordance to the mounting size of the faucet).

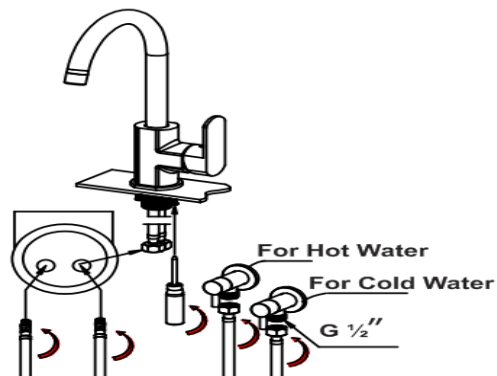


2. Make sure all the seal installed properly and tightly.

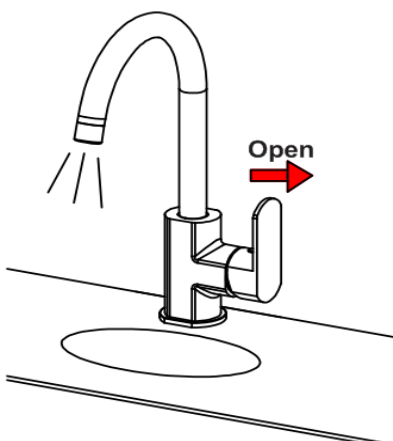


3. Connect the hot water and cold water hoses, and then tighten them with a wrench.

Note: For a single tap, only need to be connected to the cold water hose.



4. Do check the water outlet by pulling the lever tap to the direction of the arrow below.



5. Do not use a steel brush, abrasive cleaner or the material that contains hard chemical because they could cause the damaged or dull to the surface of this appliance.

