

User Manual Book Kitchen Sink

Series

KS

TABLE OF CONTENTS

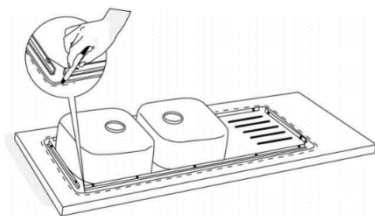
INSTALLATION	3
Top-mount Sink	3
Undermount Sink	4

This guide book explains everything you need to know about your new product. Please contact our Customer Care should you need further assistance through www.modena.com.

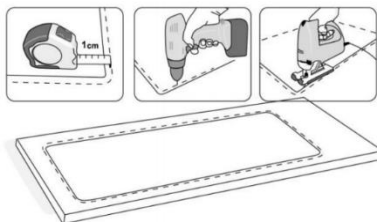
INSTALLATION

Top-mount Sink

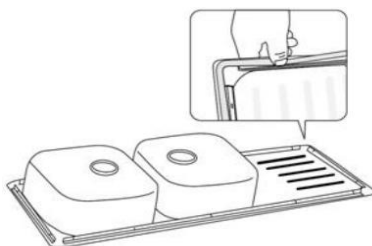
1. Place the sink upside down in the position where it will be installed and draw line around the outline of the sink on the countertop with a pencil.



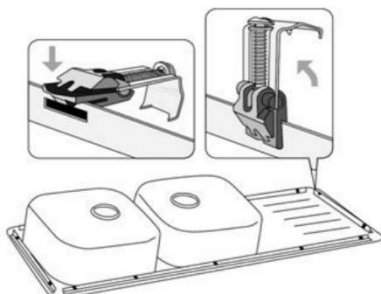
2. Draw another line 10 mm inside the first one. Cut a hole in the countertop following the second line. (Another option is use the dimension provided on the label attached on the product).



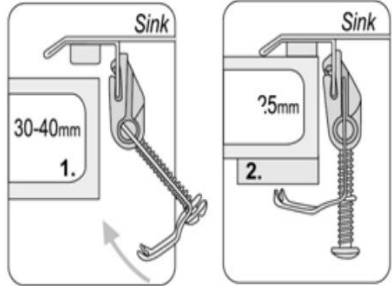
3. Adhere sealing tape around the underside of the edge of the sink, be careful to lay it smoothly (without ridges).



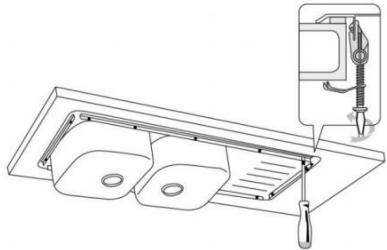
4. Place the anchor braces vertically and pull the up to lock into their horizontal position.



5. These anchor braces are designed for use with countertop 30 - 40 mm thick (1). If the countertop is thinner, insert wooden wedges between the countertop and the braces to secure them (2). After placing two at each corner, place the rest evenly spaced around the perimeter of the sink.

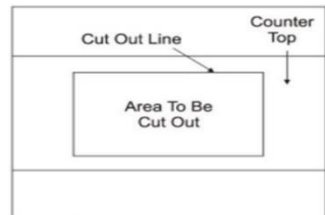
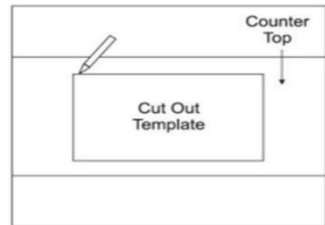


6. Tighten the screws of the anchor braces to secure the sink in place.



Undermount Sink

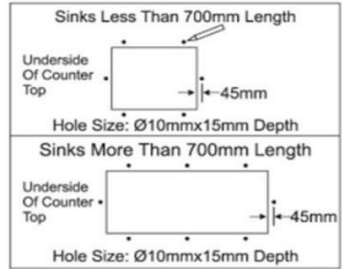
1. Place cut out template on desired sink location. Draw lines around the outline of the template.
2. Cut along the line using appropriate cutting tool.



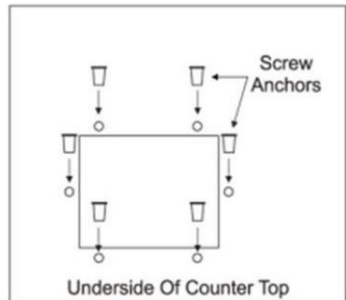
NOTE:

Make sure that the line dimension corresponds to the bowl dimension before cutting.

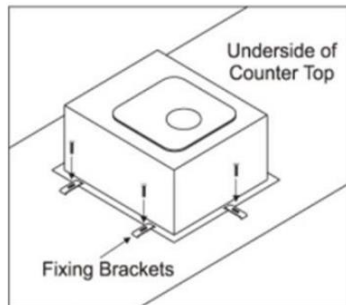
3. Drill the underside of the countertop as shown in the diagram below.



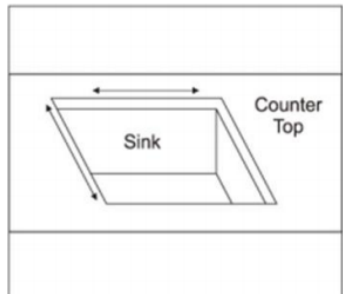
4. Insert screw anchors into the drilled holes.



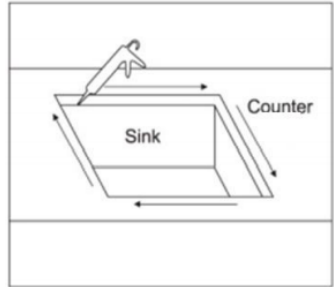
5. Place fixing brackets over the screw anchors. Insert the screw provided, but don't fully tighten.



6. Check alignment between the bowl and the cut out hole.



7. Apply suitable wet area sealant recommended for stainless steel sink and countertop material.



8. Tighten the screws carefully and remove the excessive sealant.

