

MODENA

User Manual Book

Vacuum Cleaner

Pulito Series
VC 2313

MODENA

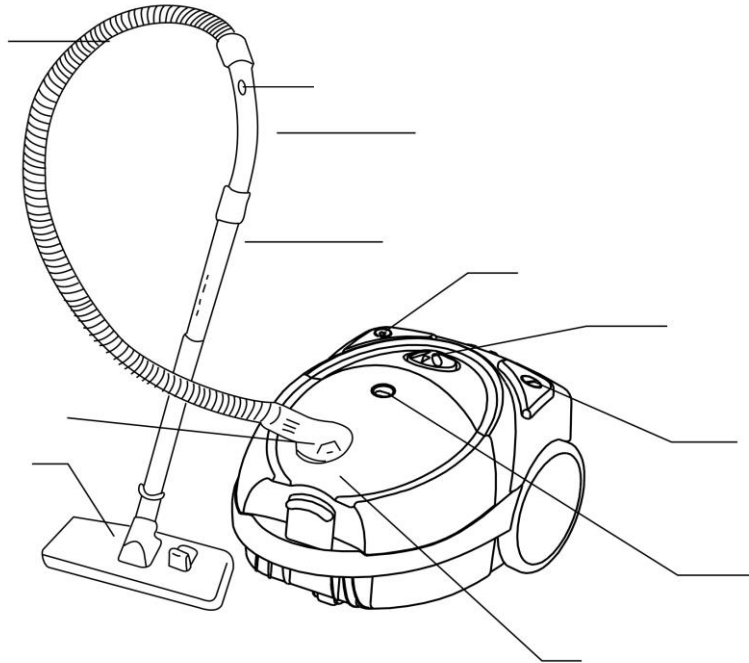
Thank you for your trust in choosing MODENA products for your household needs. With your satisfaction as our priority, we constantly aim to deliver stylishly designed products equipped with state-of-the-art technology to assist you in your daily activities.

This is your guidebook containing everything you need to know about our product. Please reach out to us if you need further assistance or other information via our Customer Care or our official website www.modena.com.

MODENA

CONTENTS	PAGE.
• Introduction	1
• Part 1 : Name of Parts	3
• Part 2 : Installation	4
• Part 3 : How to Use	5
• Part 4 : Maintenance	6
• Part 5 : Precaution Action	7
• Part 6 : Problem & Solution	9
• Part 7 : Specification	10

Part 1: Name of Parts



Names of part:

- | | |
|----------------------------------|--------------------|
| 1. Flexible hose | 7. Switch On /Off |
| 2. Adjustment level | 8. Hose grip |
| 3. Handle/Elbow | 9. Floor brush |
| 4. Pipe | 10. Dust indicator |
| 5. Button automatic cable roller | 11. Front cover |
| 6. Suction controller | 12. Dust bin |

NOZZLE:

1. Floor /Carpet



- Extend / deploy the brush to clean the hard floor surface.

2. Gap



- Pull /retract the brush to clean the carpet.



- Used for radiator, gap, corner and gap between the sofa cushions.

3. Small brush



- Used to clean the curtain, books, shelf, lamp shade and other similar objects.

* Features depend on the type of product.

Part 2: Installation

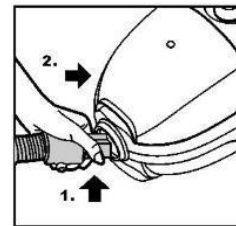
Important:

1. Read this manual thoroughly before starting operations.
2. Check whether the voltage specified on the unit fits with the one in your house. If not contact MODENA Call Center for further inquiries.
3. Unit must be connected with a properly grounded 10A electrical outlet.
4. Always unplug the power cord before installing / detaching accessories, disassembling the unit, when the unit is not to be used for a long time, or before cleaning and repairing.
5. Do not use solvent substances (methylated spirits) to clean the unit
6. Do not use the unit on wet surface.
7. When the unit is activated, do not leave it without supervision. Make sure to keep it away from children or incompetent people.
8. The unit is meant for house hold usage. Use it according to the instructions provided in the manual.
9. Do not activate the unit if the unit is damaged.
10. Contact the dealer or call center for repairs and after sales service.
11. If the power cord is damaged, contact MODENA call center for replacement.
12. This unit is not meant to be used by children, mentally or physically challenged, or those who lack the experience and knowledge regarding the unit. For safety precautions, provide serious instructions and guidance when they attempt to do operations.
13. Keep the unit away from children's reach.
14. If you wish to unplug the power cord from the socket, pull the plug, not the cord. If the power cord is damaged, both cord and the plug must be repaired by a qualified technician.
15. If the dust indicator light turns red, immediately replace or clean the dust container.
16. Replace or clean the dust container on a regular basis to prolong the product's age.
17. Make sure the front cover is always attached.

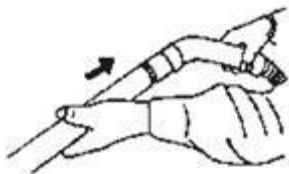
CONNECTING THE VACUUM CLEANER

Remove flexible pipe

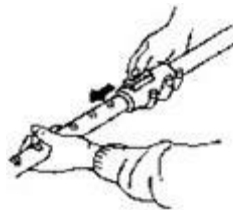
Remove the cord plug from the socket before releasing the flexible pipe from the air inlet. Press the button at the end of the flexible pipe and pull to release it.



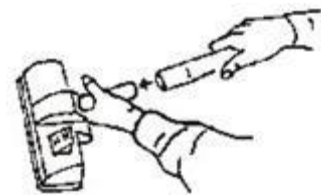
Installing and connecting additional pipes and accessories



- Install additional pipes on the handle.



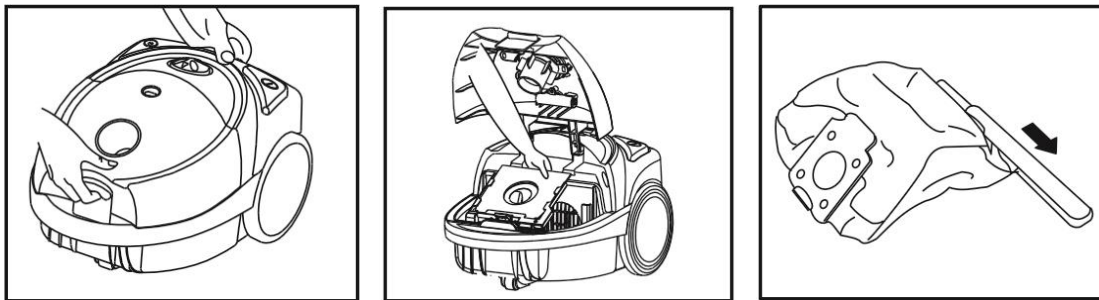
- Connect additional pipes.



- Install the accessories to the additional pipe.

Emptying and replacing dust bag

After removing the flexible pipe, open the cover by pressing the lock button and pull it upwards. Then, remove the dust bag.



a. Type of dust bag

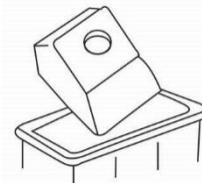
1. Cloth

To remove the dust from the cloth dust bag, remove the pins on the bottom of the bag to release the dirt inside the bag, clean the bag and pin the bottom part again.



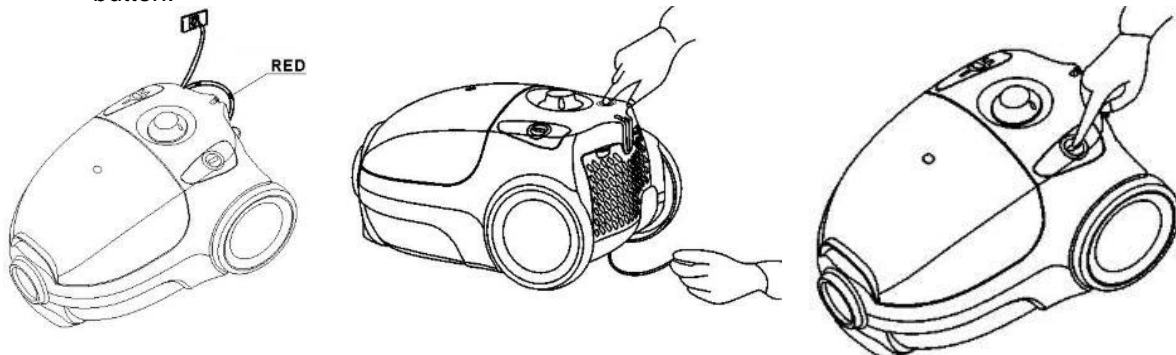
2. Paper

If you use a dust bag made from paper, throw away the bag after usage.



Part 3: How to Use

1. Before usage, pull / detangle the power cord as necessary and connect the power cord head to the socket. Red represents the maximum efficient length of cord. Do not pull the cord beyond the red mark. To roll the power cord, press the cord roller button with one hand and detangle the cord with one other hand.
2. Press the On/Off button to activate / turn on the unit. Set the vacuum power to MIN before activating the unit.
3. The vacuum power can be adjusted according to the needs by turning the vacuum power button.



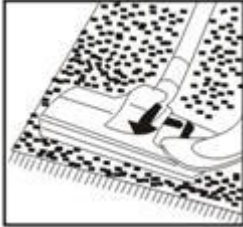
4. Nozzle brush usage.

- Floor/Carpet

Extend / release the brush to clean the hard floor surface.



Retract / pull the brush to clean the carpet.



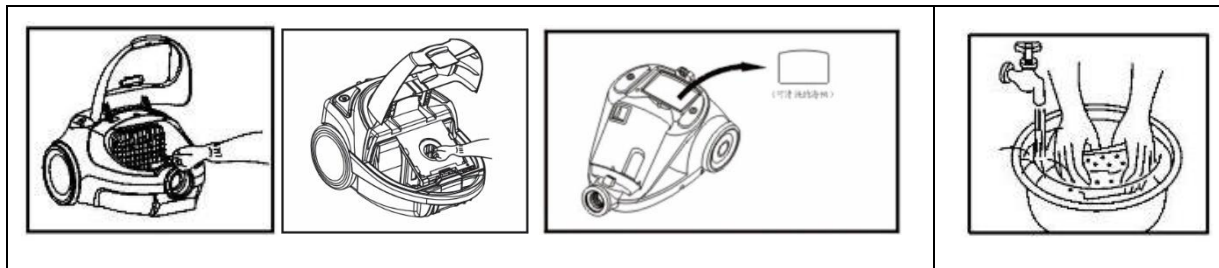
- Small brush
Used to clean the dust on the curtain, book, shelf, lampshade and other objects.
- Gap
Used to clean the gap, corner, radiator and the gap between the sofas.

5. After usage, turn off the vacuum cleaner by pressing the ON/OFF and reroll the power cord.
6. For certain models, do not move the vacuum cleaner when the cleaning pipe is not hooked perpendicularly to the hole / hook on the unit. This may cause the floor to get scratched from the brush nozzle.

Part 4: Maintenance

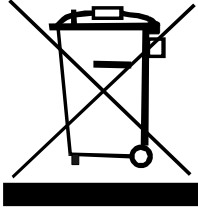
Always remove the plug from the socket before performing maintenance on the vacuum cleaner.

1. Clean the unit using dry cloth. Do not use shining powder, detergent, gasoline, acid, thinner, oil or hot water to clean any part of the unit.
2. Remove the inlet and outlet air filter, clean the filter by submerging it in warm water, and dry it inside out. After it's dried, reinstall it to the vacuum.



- Make sure the filter is dry when reinstalled to the vacuum cleaner.
- Make sure it is placed in its proper place.

If the unit is not going to be used for a long time, store it in a dry place with good circulation. Keep away from children.



DISPOSAL

Environmental Preservation

Electronic waste should not be disposed of with household waste. Dispose properly at an electronic dump site. Ask for advice from the retailer or the local authorities on how to perform proper disposal and recycle.

Part 5: Precaution Action

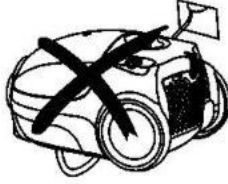
Perform the following preventive measures before operating the vacuum cleaner:

- Read all instructions thoroughly and pay attention to the pictures before operating the vacuum cleaners.
- Check the voltage specifications on the vacuum cleaner whether it matches with the voltage in your house. If it doesn't match, contact the MODENA Call Center for further information.
- Do not leave the vacuum cleaner while it is still connected to the socket. Always unplug the power cord from the socket if the vacuum cleaner is not used.
- To avoid electric shock, do not use the vacuum cleaner outside the house or out in the open area and do not put or submerge the power cord or plug in the water or liquid substance.
- Tight supervision is required if vacuum cleaner is used around the children.
- Do not operate the vacuum cleaner if the power cord or the plug is damaged, dysfunctional, taking fall damage, or broken. Take it to our Call Center for inspection & testing, rearrangement of electrical or mechanical functions, and necessary repairs.
- Usage of additional equipment/tools without recommendations and not supplied by the manufacture may result in fire, electric shock / shortage and damage to the vacuum cleaner.
- Special attention is required for usage on stairs.
- If the air inlet, pipe nozzle or telescopic pipe is obstructed, immediately deactivate the vacuum cleaner and clear the obstruction before restarting it.
- Make sure you plug the power cord to the socket with dry hands.
- Remove large or sharp objects on the floor before using the vacuum cleaner to avoid damages to the filter.
- If you wish to unplug the power cord from the socket, pull the plug, not the cord. The damaged cord and plug must be repaired by a qualified technician.

Do not operate vacuum cleaner near heat sources such as stove, cigarette buds, etc.



Do not use the unit on top of the power cord. Make sure the power cord is not pinned or stepped on when the unit is operating.



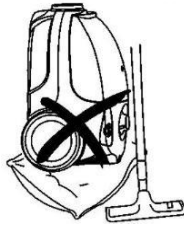
Do not use the unit to vacuum / clean lighted match, lighted cigarette or hot dust.



Do not use the unit on wet surface.



Do not obstruct the air inlet or the drainage.



Do not use the unit to vacuum / clean threads, sharp objects, nails, pins, etc.



Part 6 : Problem & Solution

In the event of operational issues, check the following problems and solutions below before contacting our Call Center:

Problem	Cause	Solution
Weak Suction Power	<ul style="list-style-type: none"> - Dust bag and the cylindrical filter are obstructed. - Brush or nozzle are obstructed. - Flexible pipe is obstructed. 	<ul style="list-style-type: none"> - Replace or clean the dust bag and the cylindrical filter. - Clean the brush and nozzle from dust. - Clean the flexible pipe
The motor cannot rotate / vacuum	<ul style="list-style-type: none"> - Is the cord plugged to the socket? - Has the ON button been pressed yet? 	<ul style="list-style-type: none"> - Reconnect the power cord with the socket. - Press the ON Button

Part 7: Specification

VACUUM CLEANER	VC 2313 U	VC 2313 N	VC 2313 N
Type	DRY	DRY	DRY
Color	Yellow	Blue	Green
Capacity (liter)	1.1	1.1	1.1
Filter :			
- Clot	Yes	Yes	Yes
- Paper	No	No	No
- Motor	Yes	Yes	Yes
- Outlet	Yes	Yes	Yes
- Hepa	No	No	No
- Screen	No	No	No
Pipe			
- Type	Tube In	Tube In	Tube In
- Material	Plastic	Plastic	Plastic
- Suction valve	Yes	Yes	Yes
Motor safety mechanism	Yes	Yes	Yes
Nozzle :			
- Floor/Carpet	Yes	Yes	Yes
- Water	No	No	No
- Gap	Yes	Yes	Yes
- Dust/Furniture	Yes	Yes	Yes
Brush nozzle	Fiber	Fiber	Fiber
Cord length (meter)	4.5	4.5	4.5
Wheels	Yes	Yes	Yes
Noise level (dbA)	≤ 76	≤ 76	≤ 76
Suction power (kPa)	≥ 18	≥ 18	≥ 18
Voltage (Volt)	220	220	220
Electrical frequency (Hz)	50	50	50
Power(watt)	400 - 1000	400 - 1000	400 - 1000
Dimension (L x W x H) mm	240 x 340 x 200	240 x 340 x 200	240 x 340 x 200
Weight (kg)	4	4	4

S = Stainless W = White V = Silver G = Grey L = Black Y = Yellow U = Blue N = Green
 Design and specifications are subject to change at any time without prior notice.

