

User Manual Book Purifier Hood Hybrid

AX 0611 BABK
AX 0711 BABK
AX 0921 BABK
AX 2711 CABK
AX 2725 CASS
AX 2921 CABK
AX 2925 CASS

TABLE OF CONTENTS

Part 1: Safety Warnings	3
Part 2: Name of Parts	4
Part 3: Installation	5
Part 4: How to Use	9
Part 5: Maintenance	11
Part 6: Problem & Solution	14
Part 7: Precaution	15
Part 8: Specification	16

This guidebook explains everything you need to know about your new product. Please contact our Customer Care should you need further assistance through www.modena.com

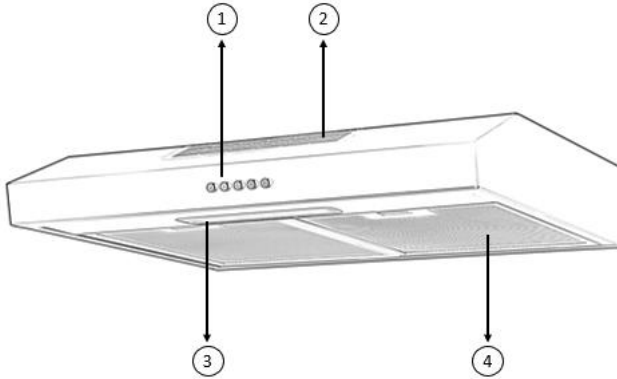
PART 1: SAFETY WARNINGS

- Do not allow children to operate the unit.
- This exhaust hood is designed for home use only, not suitable for the environmental condition, bake shop, barbecue, and other commercial purposes.
- The exhaust hood should be cleaned periodically so that its power is maintained.
- Clean the exhaust hood according to the instructions contained in this book and keep it away from the danger of being burnt.
- No direct grilling on a gas stove.
- Keep your kitchen remains good circulation.
- Before connecting the unit to a power source, make sure the power cord is in good shape. If there is damage to the power cord, the replacement must be performed by qualified personnel or contact the MODENA Service Center for replacement process.
- The room should have good ventilation during the use of exhaust hood on gas stoves or other fuels.
- The exhaust hood waste pipe should be separated with an air-duct.
- Regulations regarding the air exhaust must be met.
- The unit is not intended to be used by persons (including children) with a physical, sensory, or mental disability, or lack of experience and knowledge unless they have been given supervision or instructions concerning the use of the appliance by the person who is responsible for their safety.
- Children should be supervised to ensure that they are not playing with the unit.
- Do not strike a fire under the sucker of the exhaust hood.
- The exhaust hood is not aimed to be installed on top of the stove that had more than four burners.

Electrical Shock Hazards

- Connect the unit only to a grounded power socket correctly. If you are in doubt, ask advice from an experienced technician who is suitably qualified.
- The failure to follow these instructions may cause electric shock, fire, or other hazards that are fatal.

PART 2: NAME OF PARTS



1. Control panel
2. Microparticle Filter
3. Lamp
4. Aluminum filter

*The image is a general overview and is not necessarily the same as the product you receive.

PART 3: INSTALLATION

The exhaust hood is equipment that sucks smoke and cooking fragrance. With a vent hood, your kitchen will be free from oil particles that may produce bad odors.

1. Check the strength of the wall on which the exhaust hood is to be installed. Make sure the wall can sustain the weight/load of the vent hood.
2. The exhaust hood should be installed precisely over the stove at a vertical distance of 65 - 75 cm from the stove surface.



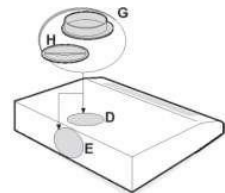
Preparations to Be Made Before Installing the Exhaust Hood

1. Remove the exhaust hood from its packaging and put it on an even place (eg. Tables).
2. Open the grid by sliding the right and left grid locker (A) and then pull it. Remove the spigot/flange (pipe connector) and the hole cover from the plastic bag.
3. Turn the air-directing knob to the following position:
 - a. Exterior symbol for ducting/exhaust system
 - b. Interior symbol for the recirculation system
4. Cover the grid
5. The exhaust hood has two holes in it: Hole D and Hole E (look at the picture). To install the spigot/flange and hole cover, follow these instructions:



A. For ducting / exhaust system:

Install the spigot/flange G on one of the air holes, either D or E. Holes which do not have spigot/flange shall be covered with Hole Cover H.



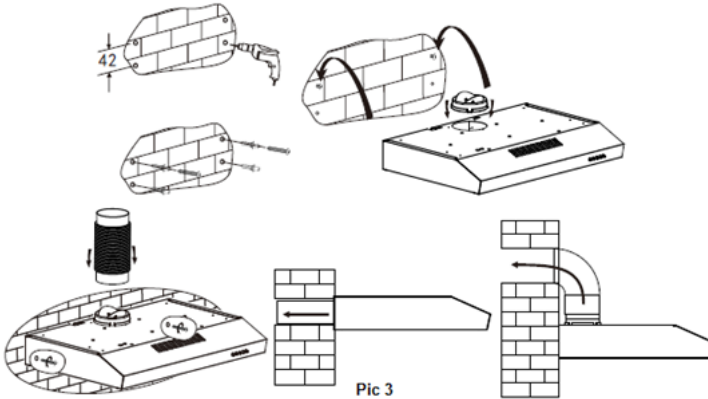
B. For recirculation system:

Both air holes D and E shall be covered with the available plastic Hole Cover.

Installation of Exhaust Hood

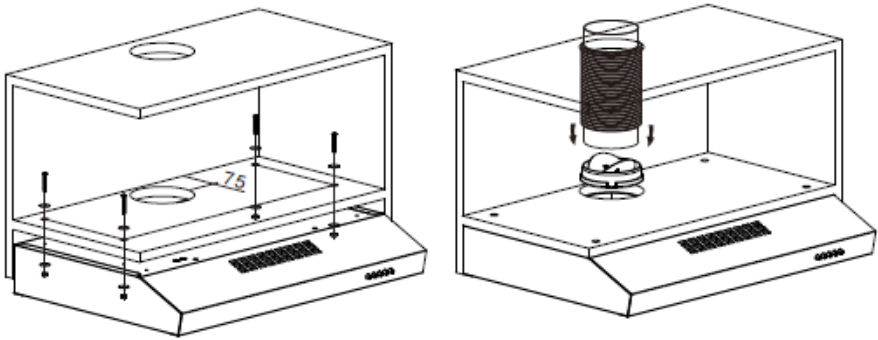
Exhaust hood can be installed on the concrete (brick) wall or the bottom part of the kitchen set.

Installing on concrete (brick) wall



1. To install onto the wall, drill 4 holes of \varnothing 8mm on a suitable place according with the centre distance of hole in the back of the cooker hood.
2. Insert the Fisher into the holes.
3. Insert the two screws into the nuts and tight. Notes: the screws installed should leave for 2-3mm out of the wall to hang the hood.
4. Fix the outlet on the top of the hood and hang the cooker hood onto the fixed screws.
5. Tighten the screws.

Installation on the bottom part of the kitchen set



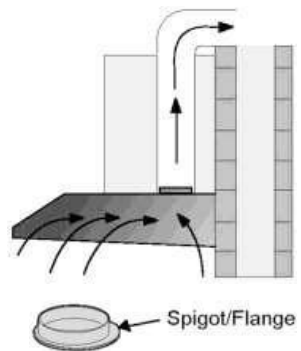
1. Drill 4 holes of \varnothing 6mm at the bottom of the hanging cupboard. If use vertical ventilation, need to cut out \varnothing 130mm on the hanging cupboard.
2. Put the outlet to the cooker hood, then install the cooker hood on the bottom of the cupboard, tighten the cooker hood with enclosed 4 screws and 8 flat interfaces, and 4 screw nuts.
3. Install the adjusted board on the bottom of the hood in order to keep out the gap between the hood back and the cupboard.

Operating Procedure

MODENA Exhaust Hood has 2 (two) work methods as follows:

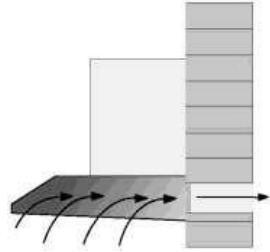
A. Ducting / Exhaust System:

- In this mode, the exhaust hood operates by sucking the smoke/cooking odor and then discharging it out of the vent.
- A heat / fire-resistant ducting system is required to discharge smoke/odor out of the vent.
- To connect the exhaust hood with the discharge duct, use the "spigot/flange" provide on each suction hood package



Several things require attention in installing the ducting system exhaust hood:

1. Carbon filter must be removed because the cooking odor will be sucked and immediately discharged out of the room.
2. The suction force will be diminished if the exhaust system is too long and there are too many elbows.
3. Do not connect the exhaust system to a chimney or an air duct or hot steam duct.
4. If the exhaust hood is to be installed in a multi-storied building or an apartment, consult with the person in charge of the building/apartment prior to installing the exhaust system.
5. Exhaust hood with ducting system should be used in an open-air room with good air circulation.

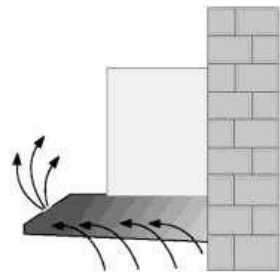


B. Recirculating system:

In this version, the exhaust hood sucks the smoke/cooking odor and filters it through an aluminum filter, carbon filter & Microparticle filter. The filtered smoke is then re-circulated into the room.

Several things must be ensured when installing an exhaust hood with a recirculation system:

1. Both carbon filter and aluminum filter must be used.
2. The position of both filters must be correct.
3. Holes, where the air duct is discharged, are found in the front cabinet of the exhaust hood and cannot be closed.



Electricity Connection

MODENA Exhaust Hood is designed for 220-volt electricity input, single phase with 50 Hz of frequency. This appliance uses a double-insulated power cord (2 parallel cords) and should not be connected to a grounding wire.

ATTENTION:

- Overall installation should be performed by a competent person in the field of electrical or able to do the installation. If you will do the installation yourself, it is recommended that at first consult to the Service Center Modena.
- Details of the method and frequency of cleaning listed in the "Installation and Maintenance"
- To separate the equipment from the power source should not attract a wired connection, but the pull of the base / head power cable.

PART 4: HOW TO USE

Push Type Button



Stop

The Buttons are for turning off the cooker hood



Motor Speed Button - Low

Suitable for air circulation used in the kitchen or cooking conditions that do not cause a lot of smoke or steam



Motor Speed Button - Medium

Air circulation speed that is suitable for a cooking process that raises a medium volume of smoke or fumes.



Motor Speed Button - High

When the level of smoke or steam produced is high enough, then use a high-speed level for effective air circulation.








Lamp

Button to turn on/off lights

Touch Control panel



	On/Off Button To turn on / off the hood
	Speed Decrease Button To decrease fan speed
	Speed Decrease Button To decrease fan speed
	Auto Heat Sensor To active auto heat feature
	Light Button To On/Off lamp

Auto Heat Sensor

To activate the feature, press this button (**A**) and then the product will be automatically once someone starts cooking.

Gestur Control

Wave your hand from left to right to turn on the cooker hood and increase fan speed.

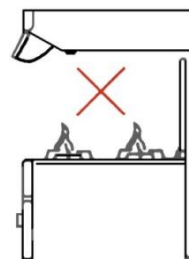
Wave your hand from right to left to decrease the fan speed and Turn off product.

Configure the Modena Smart AX 2925 CASS & AX 2725 CASS Application

1. Install Modena Smart Apps on your smartphone
2. Connect the smartphone to the network
3. Open the Modena Smart app
4. Follow the registration steps instructed by the App
5. Press the sign/icon + or Add Device
6. Select Kitchen Appliances in the Application sidebar
7. Select the Kitchen Hood icon
8. Press the light button and the + button simultaneously on the glass panel for a few moments until the indicator on the display screen flashes.
9. Select a network and enter the password
10. Select confirm
11. Wait a few moments for it to finish

CAUTION

- The setting of the cooker hood motor speed is adjusted to the thickness of the smoke / steam that arises when cooking.
- Avoid a direct contact between the stove being turned on and the cooker hood.
- To get the optimal filtering, cooker hood should be turned off 20-30 minutes after cooking is finished.
- The UV Lamp will be active simultaneously with the suction hood lamp.



PART 5: MAINTENANCE

MODENA cooker hood is specifically designed for long-term use so that it does not require complicated maintenance. However, there are some things that are recommended to take care of your cooker hood so that the quality is maintained.

Cleaning Cabinet

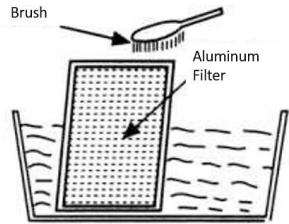
To clean the surface of the hood cabinet from adhering to oil particles, use a rag/foam rubber and soapy water, then wipe dry. It is advisable to clean the cabinet after every cooking

Cleaning Filters

Smoke/steam from cooking and oil particles that arise while cooking will be directly absorbed by the filter, therefore it needs to be cleaned periodically

Filter Aluminum and Metal Filter

Under conditions of regular use, it is best to clean aluminum filters every 10 – 15 days by soaking the filter in soapy water using a basin/tub for 1 hour (see picture) and using a soft brush to clean it, then dry the filter thoroughly - completely dry before putting it back on. • Do not bend the filter when washing it

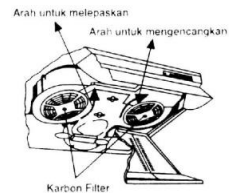


Carbon Filter

The carbon filter must be replaced with a new one at least every 3 months of use, or if the carbon filter is no longer able to absorb the aroma of cooking

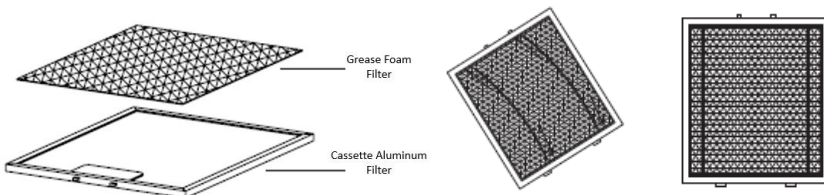
Type 1 :

1. Disconnect the plug cable from the electrical outlet.
2. Open the suction cup Cassette Aluminum Filter.
3. Rotate the carbon filter anticlockwise then remove the carbon filter you want to replace.
4. Install the new carbon filter by placing the carbon filter in its position and then tighten it by turning it clockwise.



Type 2 :

1. Disconnect the plug cable from the electrical outlet.
2. Open the suction cup Cassette Aluminum Filter.
3. Remove the steel wire from the aluminum filter.
4. Place the sheet carbon filter on the back side of the aluminum filter.
5. Make sure the steel wire is attached after attaching the carbon filter sheet to the aluminum filter.

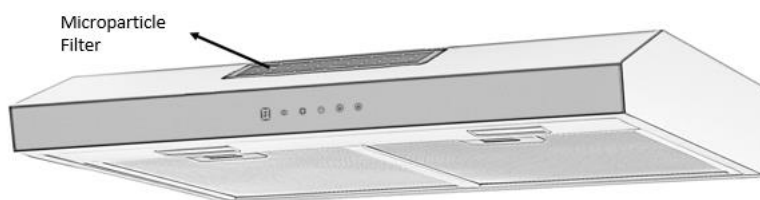


PERHATIAN:

Karbon filter tidak dapat dicuci dan harus diganti dengan yang baru jika batas pemakaian sudah berakhir.

Ada risiko kebakaran apabila pembersihan tidak sesuai dengan petunjuk yang ada. Kondisi karbon yang banyak minyak dapat memudahkan terjadinya kebakaran, jika terjadi kelalaian pemakaian.

Microparticle Filter



1. Remove the Microparticle Filter Cover
2. Remove the microparticle filter for cleaning by washing it with clean water.
3. Replace the microparticle filter and microparticle filter cover.

PERHATIAN:

Microparticle filters are recommended to be replaced every 3 months to get maximum results.

PART 6: PROBLEM & SOLUTION

Consult the following troubleshooting before contacting our Service Center regarding your exhaust hood:

Problem	Possible Cause	Recommended Action
Exhaust hood malfunctioning	<ul style="list-style-type: none"> • Power cord is not yet connected to the electrical outlet. • Electrical outlet does not have electricity current in it. 	<ul style="list-style-type: none"> • Connect the power cord to the electrical outlet. • Connect the power cord to a properly functioning electrical outlet.
Reduced suction power	<ul style="list-style-type: none"> • Dirty aluminum filter. • Dirty carbon filter. 	<ul style="list-style-type: none"> • Clean the aluminum filter, dry it and place it back on the vent hood. • Replace the carbon filter with a new one.
Motor fan malfunctioning	<ul style="list-style-type: none"> • Broken motor coil. 	<ul style="list-style-type: none"> • Contact MODENA Service Center.
Motor stops working after a while	<ul style="list-style-type: none"> • Safety thermal regulator is active. 	<ul style="list-style-type: none"> • The vent hood is installed too close to the stove. • Air circulation is not optimal. • Contact MODENA Service Center.

PART 7: PRECAUTION

- Make sure the hood is turned on after a while to allow the air around the cooking area to circulate properly and make sure the hood is turned off after this process.
- Periodically inspect the filter and oil reservoir. Make sure that the filter is in clean and good condition and make sure the oil reservoir is not exceeding the specified limit.
- If you smell burnt/burnt smell from the hood, immediately turn off the hood and contact the MODENA Service Center.
- Perform a routine service on your stove every 3 (three) months, because if there are problems/problems with your exhaust hood, it can be immediately identified and repaired. Contact MODENA Service Center

PART 8: SPECIFICATION

Model	AX 2925 CASS	AX 2725 CASS
Type	Purifier Slim Hood Hybrid	Purifier Slim Hood Hybrid
Cabinet Material	Stainless	Stainless
Color of Cabinet	Stainless	Stainless
Color of Front Panel	Black	Black
Number of Motor	2	2
Lamp	2	2
Control Type	Touch Control	Touch Control
Gesture Control	Yes	Yes
UV Sterilwave	Yes	Yes
Heat Sensor	Yes	Yes
IOT Function	Yes	Yes
Ionizer (Germinator)	Yes	Yes
Filter type	<ul style="list-style-type: none"> • Filter Karbon • Cassette Aluminium Filter • Microparticle Filter 	<ul style="list-style-type: none"> • Filter Karbon • Cassette Aluminium Filter • Microparticle Filter
Motor power	2 x 100 W	2 x 100 W
Lamp power	2 x 1.5 W	2 x 1.5 W
Dimension (L x W x H) mm	900 x 480 x 100	700 x 480 x 100

Model	AX 2921 CABK	AX 2711 CABK
Type	Purifier Slim Hood Hybrid	Purifier Slim Hood Hybrid
Cabinet Material	Metal	Metal
Color of Cabinet	Black	Black
Color of Front Panel	Black	Black
Number of Motor	2	1
Lamp	2	1
Control Type	Push Button	Push Button
UV Sterilwave	Yes	Yes
Ionizer (Germinator)	Yes	Yes
Filter type	<ul style="list-style-type: none"> • Carbon Filter • Cassette Aluminium Filter • Microparticle Filter 	<ul style="list-style-type: none"> • Carbon Filter • Cassette Aluminium Filter • Microparticle Filter
Motor power	2 x 100 W	1 x 100 W
Lamp power	2 x 1.5 W	1 x 1.5 W
Dimension (L x W x H) mm	900 x 480 x 100	700 x 480 x 100

Model	AX 0921 BABK	AX 0711 BABK	AX 0611 BABK
Type	Purifier Slim Hood Hybrid	Purifier Slim Hood Hybrid	Purifier Slim Hood Hybrid
Cabinet Material	Metal	Metal	Metal
Color of Cabinet	Black	Black	Black
Color of Front Panel	Black	Black	Black
Number of Motor	2	1	1
Lamp	2	1	1
Control Type	Push Button	Push Button	Push Button
UV Sterilwave	Yes	Yes	Yes
Ionizer (Germinator)	Yes	Yes	Yes
Filter type	<ul style="list-style-type: none"> • Carbon Foam Filter • Cassette Aluminium Filter • Microparticle Filter 	<ul style="list-style-type: none"> • Carbon Foam Filter • Cassette Aluminium Filter • Microparticle Filter 	<ul style="list-style-type: none"> • Carbon Foam Filter • Cassette Aluminium Filter • Microparticle Filter
Motor power	2 x 100 W	1 x 100 W	1 x 100 W
Lamp power	2 x 1.5 W	1 x 1.5 W	1 x 1.5 W
Dimension (L x W x H) mm	900 x 480 x 100	700 x 480 x 100	700 x 480 x 100



PT MODENA INDONESIA

Jl. Industri Raya I Blok D-8,
Jatiuwung, Tangerang 15135