

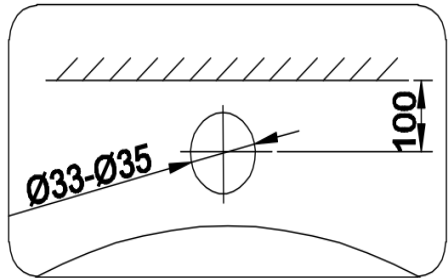
MODENA

User Manual Book Kitchen Tap

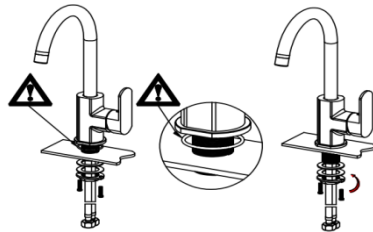
KT 2910 SPCR

INSTALLATION INSTRUCTION

1. Create a cut-out line as picture beside on the medium that will be used. Then, drill holes on the cut-out line following the shape and size that has been made (in accordance to the installation size of the tap).



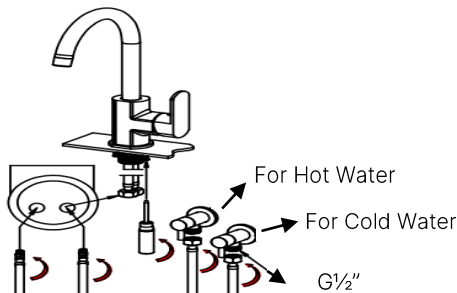
2. Make sure all the seal installed properly and tightly.



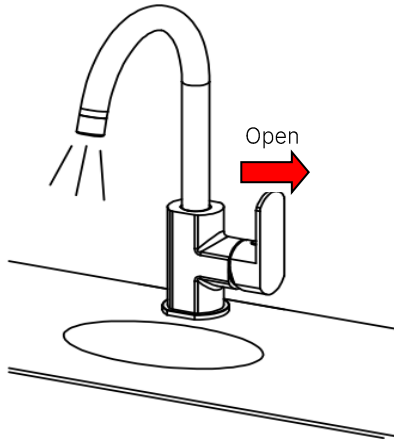
3. Connect the hot water and cold-water hoses, and then tighten them with a wrench.

NOTE

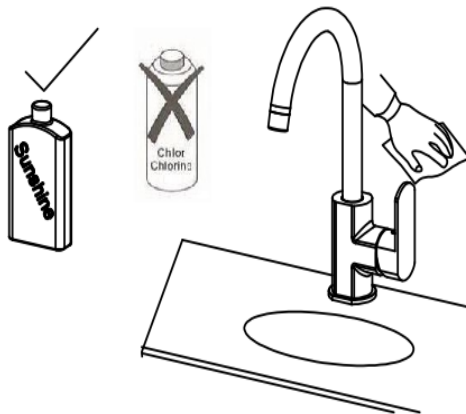
For a single tap, only need to be connected to the cold-water hose.



4. Do check the water outlet by pulling the lever tap to the direction of the arrow below.



5. Do not use a steel brush, abrasive cleaner or the material that contains hard chemical because they could cause the damaged or dull to the surface of this appliance.



PRODUCT IMAGE

